



TOSOH

AIA-2000

FULLY AUTOMATED
ENZYME IMMUNOASSAY ANALYZER

Advanced
Immunoassay Testing



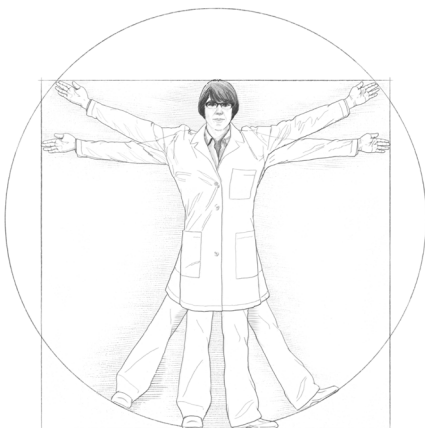
TOSOH BIOSCIENCE

www.tosohbioscience.us

High Powered and Flexible Immunoassay Testing

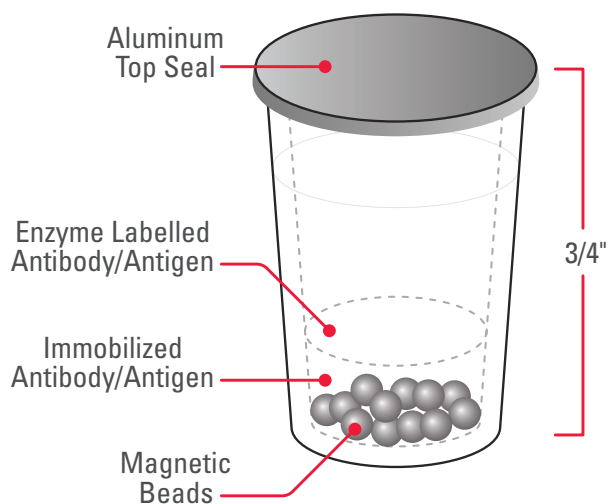
- Throughput of 200 results per hour
- Load up to 960 tests (48 trays)
- Automatic inventory management of reagents and supplies
- Additional substrate bottle prevents depletion
- Automated daily maintenance and record keeping
- Random access and continuous loading
- Dual sampling arms
- User defined programming
- True auto dilution from 2 to 1000
- Unit Dose Test Cup reagent system

AIA-2000



Time Tested Reliable Reagents:

Tosoh Unit Dose Test Cup

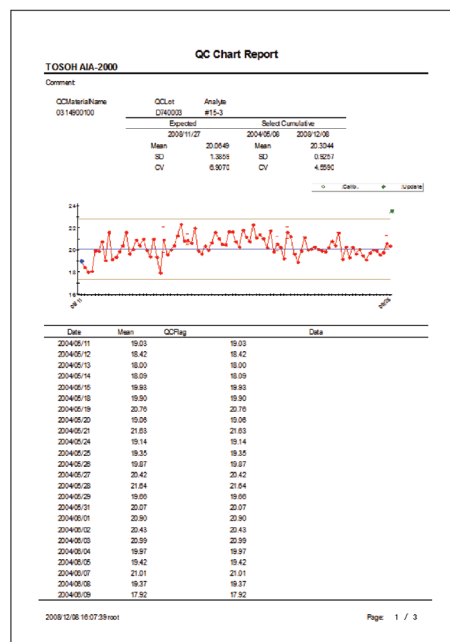


Reagent Diagram

- Dry reagent format requires no pre-mixing, no pre-measuring, no on board refrigeration and no waste.
- Calibration stability of up to 90 days for most assays.
- Reagents have one year shelf life from date of manufacture.
- Bar-coded for automated scheduling and inventory management.
- Extensive test menu includes thyroid, cardiac markers, tumor markers, reproductive hormones, anemia markers, and metabolic assays.
- Common to all Tosoh AIA Platforms

Report with Confidence

- Sophisticated calibration and control monitoring.
- Customizable flags.
- Graphical depiction of results.
- All AIA instruments provide consistent results between testing platforms.
- Tosoh's technical team of experts ensures accurate result reporting.



QC Result Print-out

Time is of the Essence

- Throughput of 200 tests per hour.
- First result in approx. 18 minutes.
- Minimal maintenance: Daily maintenance takes approx. 5 minutes.
- Multiple robotic arms and 3 incubators, handle the various sample processing steps quicker to speed up overall sample processing.
- Continuous processing allows specimens, tips and reagents to be added without interrupting work in progress.
- Multiple STAT processing available.

AIA-2000 Operation: Simple and Intuitive

- Touch screen monitor allows easy instrument operation.
- Simple icons and color codes guide the operator.
- User friendly software.
- Automated daily maintenance.
- Automated pre-treatment.
- Automated dilution.
- Reflex testing.
- Customizable pop-up reminders for reagent inventory and calibration curve stability.

Freedom to Walk Away

- 960 test cups give a walk away time of approx. 5 hours.
- 576 tips give a walk away time of approx. 3 hours.
- 2 substrate bottles give a walk away time of approx. 4 hours.
- 16 positions for secondary reagents.
- 20 sample racks (200 specimens) can be loaded at one time.
- Ask about Line Automation Model.

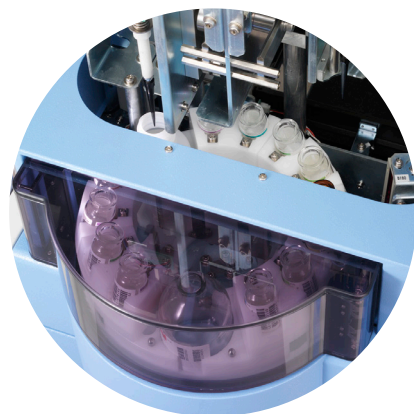
AIA-2000



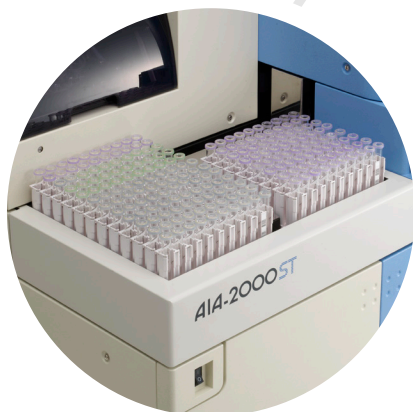
A1A-2000



4 Wash Probes

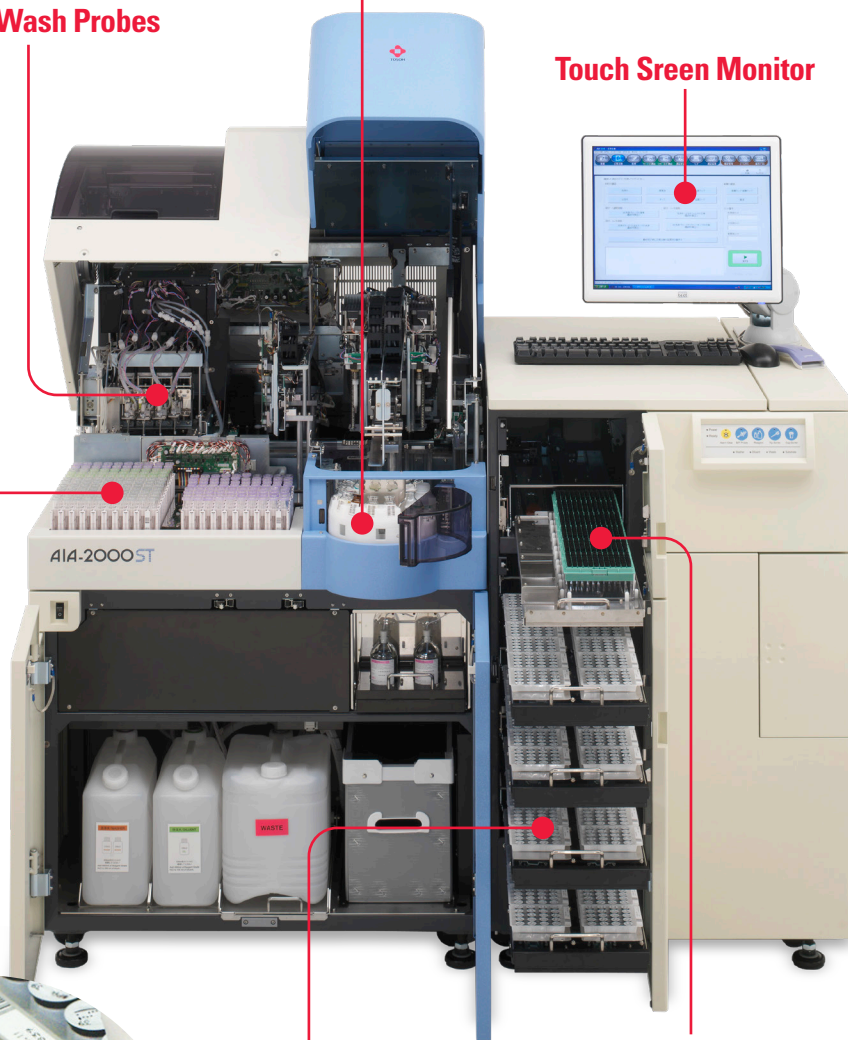
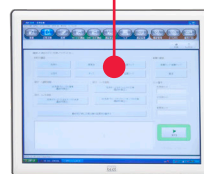


Secondary Reagents



200 Sample Loader

Touch Sreen Monitor



576 Pipette Tips



960 Test Cups



Main Specifications

Assay principal
Processing method
Processing capacity
In vitro diagnostic reagent
Sample volumes
Sample clot detection
Measuring conditions

Specimen dilution factors
Specimen pretreatment
Detection method
Precision control

Fluorometric enzyme immunoassay (FEIA)
Automated continuous random access
Max. 200 tests/h. (ST reagents)
AIA-PACK Series
10 to 125 uL
Pressure detection
Reaction temperature: 37 degrees Celsius
Antigen-antibody reaction time: 10 min., 20 min. or 40 min.
(depending on assay specification)
2 per assay specification selectable in the 2 to 1000 range
Automatic pretreatment (10 min. at 37 degrees Celsius)
Fluorescent measurement (top-to-top system)
Multirule (Levey-Jenning's charts)

Reagent Sorter

Reagent set count

Max. 48 trays (equivalent to 48 analytes or 960 tests)
Can be added or changed at any time by key request

Tip Sorter

Tip
Tip set count

Dedicated tips
576 (96/rack, in 6 racks)
Can be added or changed at any time by key request

Sample Loader

Specimen set count

Sample containers

Specimen barcodes

200 specimens, (add/change as required)
STAT: Using the Priority rack
Test tubes :13x75, 13x100, 16x75, 16x100 mm
(Diameter x Length)
Can be used in combination with dedicated sample cups
CODE39, CODE128, ITF, NW-7, JAN compatible (compliant
with ASTM14466-92 and CLA guideline compliant barcodes)
Min. element width: 0.191mm (0.254mm or over recommended)

Reagent Carousel

Reagent set count

Holds a max. of 16 reagent types
Can be added or changed at any time by key request
RS-232C (ASTM) or Ethernet (HL7 V2.4)
AC 100 - 240 V, 50/60 Hz
700 VA (excluding controller PC and printer (option))
Over voltage category II

External Input/Output Power Supply/Power Consumption

External Dimensions/Weight (excluding controller PC and monitor)

AIA-2000 ST

1500(W) x 907(D) x 1260(H) mm / 400 kg
59.1(W) x 35.7(D) x 49.6(H) inches / 881.8 lb

AIA-2000 LA

1500(W) x 1197(D) x 1260(H) mm / 400 kg
59.1(W) x 47.1(D) x 49.6(H) inches / 881.8 lb

Operating Environment

Temperature
Humidity
Pollution degree
Dust
Altitude

15 to 30 degrees Celsius
40% to 80% R.H. (with no condensation)
2
Average office level
Up to 2000 m

Conformity Standard

EMC standard

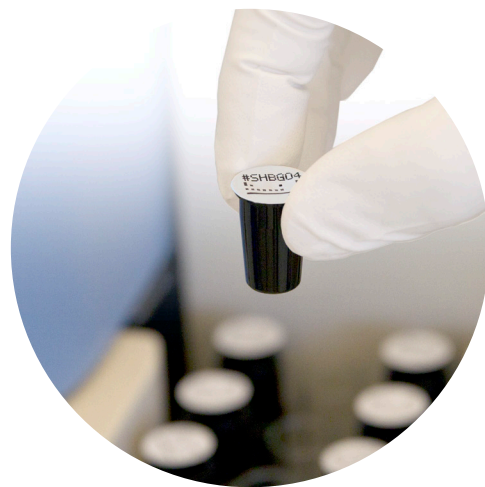
IEC61326-1: 2005 / EN61326-1: 2006,
IEC61326-2-6: 2005 / EN61326-2-6: 2006

CISPR class and group categories

Class A, Group 1
Part 15, Sub Part B, Class A
Class 1: IEC60825-1: 2001

FCC

Barcode Reader



TOSOH BIOSCIENCE

Tosoh Bioscience, Inc.
3600 Gantz Road
Grove City, OH 43123
Tel: (800) 248-6764
Fax: (650) 615-0415
www.tosohbioscience.us